

Customer	Project	Page	1 / 1
Customer no.	Project no.	Date	16/11/2012
Contact	Position	SERIES AD	
Care of	Location		

**AD 502 V2** 11 6006.4350  
 Heizungsumwälzpumpe

**Requested data**  
 Flow 0 m  
 Head Water, pure 0 m  
 Fluid Temperature 20 °C  
 Working pressure 1600 kPa

**Operating data**  
 Flow 0 m³/h  
 Head 0 m  
 Speed stages 1800 1/min  
 Speed 1800 1/min  
 Power input P1 0.00 kW  
 Permitted working pressure 1600 kPa  
 Min. fluid temperature 15 °C  
 Max. fluid temperature 95 °C

**Required working pressure**  
 Values are valid for hot water,  
 Altitude 500m above sea level.  
 Changing of required working pressure at +/- 0.01bar  
 per +/- 100m altitude above sea level.

10 kPa	10 kPa	95 °C
		55 kPa

**Pump data**  
 Installation dimension ø40 x 250  
 Rated voltage 1~230 V 50  
 Nominal speed 1800 1/min  
 Rated current 1.3 A  
 Rated power P2 0.275 kW  
 Insulation class H  
 Degree of protection IP 44

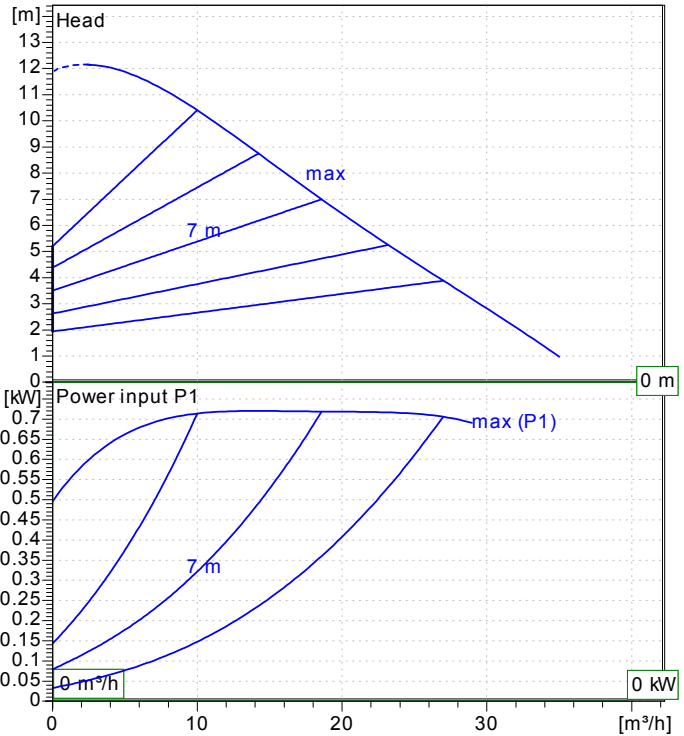
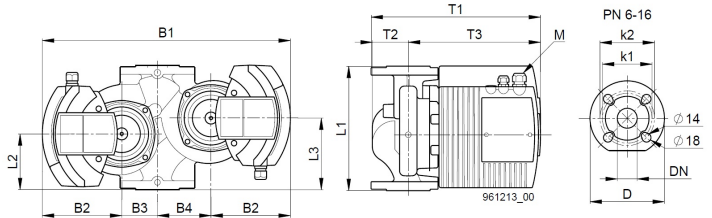
**Short-circuit-proof motor doesn't  
 required overload protection.**

**Materials**  
 Pump casing GG 20  
 Impeller Plastic  
 Can Chrome-/Nickel Steel  
 O-Ring EPDM 75  
 slide bearing Ceramic  
 Shaft Chromsteel

**Weight** 45 kg

51-54 fault or operating message  
 (switchable) as NO contact:  
 closes for fault/operation  
 Contact loading max. 250 V~, 1 A

51-52 fault or operating message  
 (switchable) as NC contact:  
 opens for fault/operation  
 Contact loading max. 250 V~, 1 A



**Electrical connection**

